

# TAYLOR HQ

154 ACRES OF BUILD-TO SUIT SITES AVAILABLE

TAYLOR, TX





# taylor hq site

## SIZE

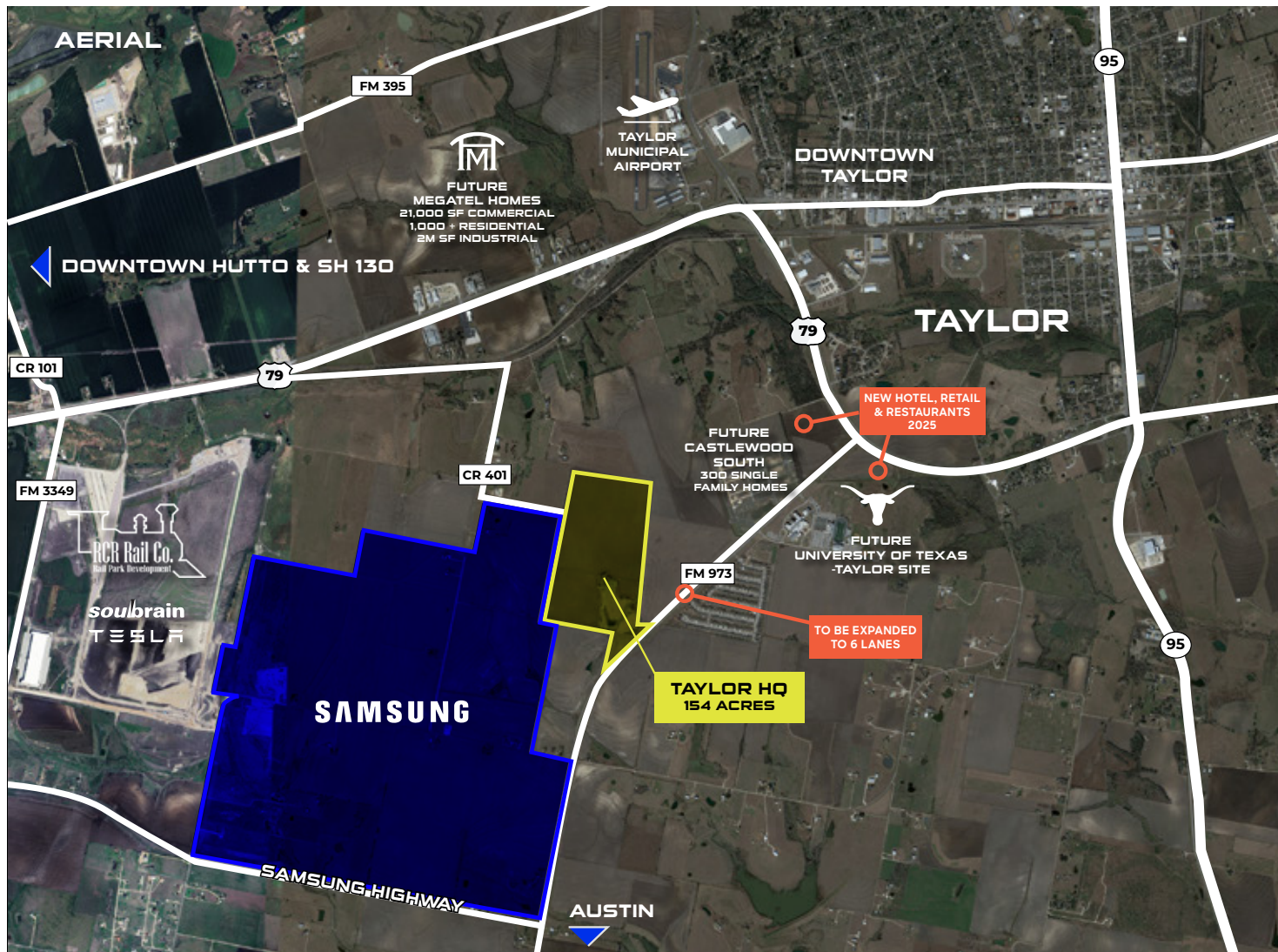
154 acres Available for  
Build to Suit Industrial,  
Office or Data Center

## OPPORTUNITY

Conceptual Site Plan  
accommodates up to  
1.25 million SF of  
single story industrial  
or manufacturing  
facilities



# taylor hq site



The “front door” to Samsung’s \$26 Billion, 1,200 acre campus.

Phenomenal ingress and egress from FM 973 and back west from CR 401.

“Employment Center” zoning allows office, technology, manufacturing, data center and industrial.

Site benefits from same water and sewer lines serving Samsung.

Retail, hotels and restaurants are committed less than a mile away on FM 973 and 79.



# samsung - taylor, tx



## **SAMSUNG SEMICONDUCTOR PLAN**

1,200+ acre campus

4.7 Million SF of semiconductor manufacturing buildings

Samsung Taylor facility will boost the production of semiconductor solutions that will power next-generation technologies in 5G, AI and high performance computing

Creation of 2,000 + permanent jobs and 20,000 more in the region after further investment

\$17 Billion investment into the campus

2022 Ground breaking & 2026 open for operations



## **UNIVERSITY OF TEXAS – TAYLOR**

Education focused on: “Advancing innovation, growing education and cultivating leadership in the semiconductor space is a major area of focus for The University of Texas, and we are excited to have a presence in the burgeoning Taylor community and the opportunity to further shape the expanding footprint of the semiconductor ecosystem in Central Texas,” said President Jay Hartzell.

# taylor, texas



Located in Williamson County, the nation's 8th fastest growing county

17,821 Total Population

11% growth rate 2010-2020

36 Median Age

Average Household Income \$75,000

Advantages - Low cost of Living and Business, Great Quality of Life, a supportive community

Major Employers - ERCOT, Taylor ISD, Durcon, Inc, E.R. Carpenter Co, Baylor Scott & White

Workforce:

100,000 Population within 15 minutes

500,000 Population within 30 miles

73% increase since 2000

## FROM TAYLOR, TX

**Samsung:** 0 miles

**Taylor Municipal Airport:** 2.5 miles

**Tesla:** 27 miles

**University of Texas at Austin:** 29 miles

**TX 130:** 11 miles

**I-35:** 17 miles

**Downtown Round Rock:** 18 miles

**Austin Bergstrom Intl Airport:** 30 miles

**San Antonio:** 150 miles

**Houston:** 150 miles

**Dallas:** 165 miles





# TAYLOR HQ



TRANSWESTERN

**CARTER THURMOND**

[carter.thurmond@transwestern.com](mailto:carter.thurmond@transwestern.com)

210.255.0644

**NASH FRISBIE**

[nash.frisbie@transwestern.com](mailto:nash.frisbie@transwestern.com)

512.314.5204

**AARICA MIMS**

[aarica.mims@kdc.com](mailto:aarica.mims@kdc.com)

214.696.7847

**BILL GUTHREY**

[bill.guthrey@kdc.com](mailto:bill.guthrey@kdc.com)

214.696.7820